

DANUSER®



2026 POCKET GUIDE

A HISTORY OF INNOVATION



TABLE OF CONTENTS

Intimidator • Tree & Post Puller	4
Mega Mixer • Material Handling Bucket.....	8
MAC Bucket • Material Handling Bucket.....	10
Mini MAC • Material Handling Bucket	12
Hammer • Post Driver	14
Hammer CB40 • Concrete Breaker	18
Hornet • Post Driver	20
T3 • Post Driver	24
EP • Auger System	28
Wobble & Stump • Specialty Augers.....	36
Python • Fence Wire Handling	38
Pallet Forks & Multi-Purpose Grapple	40

INTIMIDATOR®



NOT JUST A TREE PULLER

THE INTIMIDATOR® YOU TRUST, NOW TAKING PROVEN PERFORMANCE FURTHER

The expanded Danuser Intimidator® lineup delivers unmatched versatility, strength, and control for tree and brush removal across machines of every size. Now available in three models—the Intimidator, Intimidator CT, and Intimidator XL—this next-generation family brings improved jaw designs, enhanced digging performance, and smarter engineering that protects components and boosts productivity. Whether pulling trees or posts, moving materials, tackling demolition work, or excavating stumps, the Intimidator delivers dependable power, cleaner operation, and multi-purpose capability for tractors, skid-steers, or mini-track/skid loaders.

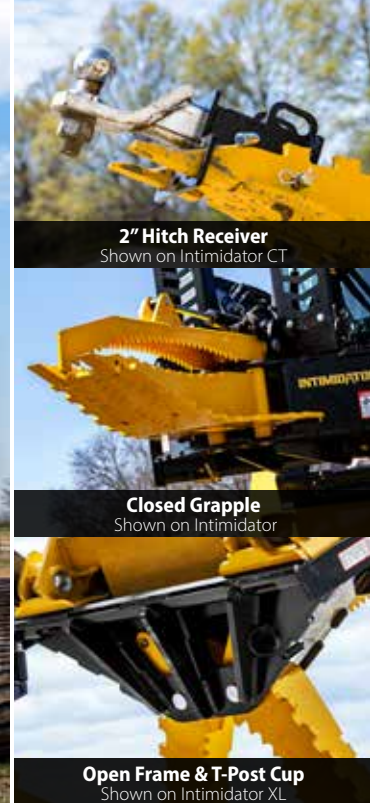
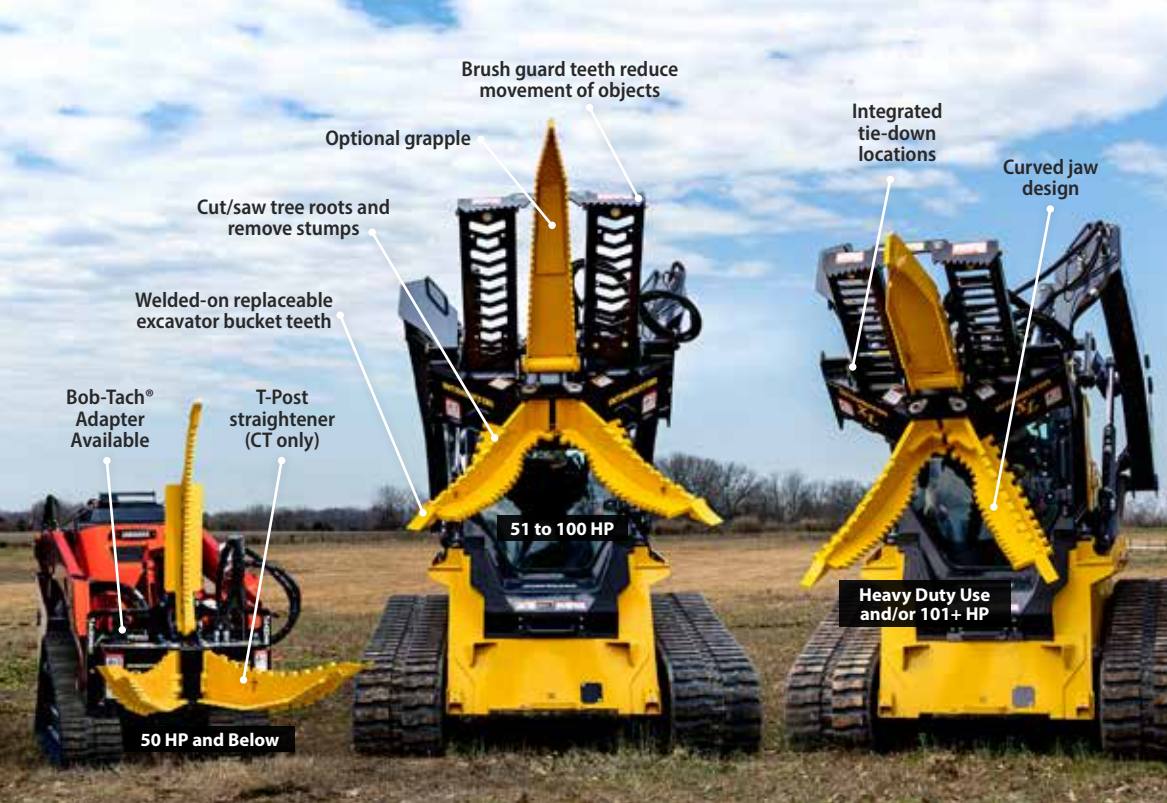
- Optional upper grapple jaw adds clamping and carrying capability
- Versatile, multi-purpose design combines the function of a tree/post puller, stump bucket, rock picker, material handler, and trailer mover
- Hitch receiver comes standard for added utility in moving trailers and equipment (not included with flat back mount options)
- Bidirectional saw teeth provide multi-direction digging and sawing, while the curved jaw design allows effective open-jaw digging around roots and dense material
- Rear-mounted 3" hydraulic cylinder and hoses are fully protected from limbs, debris, and impact for reliable operation
- Open-back frame enables fast, hassle-free cleanout and provides easy access to key components for simpler maintenance
- Lower operating costs than a bulldozer and less effort than a chainsaw

XL



CT





2" Hitch Receiver
Shown on Intimidator CT

Closed Grapple
Shown on Intimidator

Open Frame & T-Post Cup
Shown on Intimidator XL

MOUNTING OPTIONS

INTIMIDATOR CT

Skid-Steer Quick Attach

Mini-Skid-Steer Quick Attach

John Deere 200/300/400/500 Series Quick Attach

INTIMIDATOR

Skid-Steer Quick Attach

Euro/Global Quick Attach

Flat Back

(for custom fabrication to fit other mount styles)

INTIMIDATOR XL

Skid-Steer Quick Attach

Flat Back

(for custom fabrication to fit other mount styles)

ACCESSORIES



**Intimidator CT
Grapple Kit**
PN 240509



**Intimidator
Grapple Kit**
PN 250204



**Intimidator XL
Grapple Kit**
PN 240304



**Front-End Loader
Hose Kit**
20': PN 256104
25': PN 196056



**Intimidator CT
2" Hitch
Receiver Kit**
PN 240510



**Intimidator &
Intimidator XL
2" Hitch
Receiver Kit**
PN 260050

FROM THE JOB SITE TO THE FARM

ELIMINATE BACKBREAKING LABOR WITH THE DANUSER MEGA MIXER!

Using the adjustable mounting brackets and pallet fork tine slots on both sides, conveniently dispense left or right. Built-in cutting edges and a robust design make the Mega Mixer well-suited for scooping from piles. This durable mixing bucket comes standard with dual safety grates, including integrated bag busters, which can be opened individually from either side of the bucket.

The Mega Mixer is built for efficiency, featuring a sturdy 8" diameter auger paired with a heavy-duty, low-speed, high-torque motor. It can dispense 3/4 yard of material (20 cubic ft.) in just 26 seconds – saving you time on the farm or job site. Each unit ships complete with hoses and flat face ISO couplers.



MATERIAL HANDLING

Concrete
(up to 1" Slump)
Mortar
Grout
Asphalt

Washed Gravel
(up to 1")
Dry Topsoil
Sand

Livestock
Feed
Sawdust
Compost
Manure

MIX | SCOOP | DISPENSE

ACCESSORIES



Hopper Extension
PN 170095



Funnel w/ 6" Hose Adapter
PN 230214



Mega Mixer Chutes
24" PN 230205
36" PN 230210



Front-End Loader Hose Kit
PN 196056



Hydraulic Gate Kit
PN 230220



MOUNTING OPTIONS

Skid-Steer
Quick Attach

Telehandler
Pallet Forks

MAC Bucket



Yardage markers



Steel Auger



Rubber Auger

Safety grate includes integrated bag busters

All buckets come standard with two (2) 24" multi-link chutes

1/2 yard capacity (up to 3/4 yard with optional hopper extension)

Skid-steer quick attach mount on both sides for left or right discharge



MATERIAL HANDLING

Rubber Auger

Concrete
(up to 1" Slump)
Wildlife Feed
Agricultural Grains

Steel Auger

Sand
Asphalt
Washed Gravel
(up to 3/4")

TRANSPORT | MIX | DISPENSE



POWERFUL MIXING & CONVEYING

TRANSPORT, MIX, AND DISPENSE CONCRETE, WILDLIFE FEED, AGRICULTURAL GRAINS, GRAVEL, ASPHALT, AND MORE!

With a 1/2 yard base capacity (13.5 cubic ft.), and a 3/4 yard extended capacity (20 cubic ft.), the MAC Bucket replaces the manual labor of moving and mixing materials and is perfect for tight conditions where larger equipment is not ideal. This mixing and conveying (MAC) bucket features a skid-steer quick attach mount on both sides of the bucket, which allows for discharge from both the left and right sides. It is designed with no discharge gate and with the ability to self-load from loose piles, making the MAC Bucket a true one-person operation. Each MAC Bucket comes standard with two (2) 24" multi-linked chute and two (2) hoses with flush-faced couplers (ISO 16028).

ACCESSORIES



Hopper Extension
PN 230459



MAC Bucket Chute - 24"
PN 11019



Steel Auger Assembly
PN 11063



Rubber Auger Assembly
PN 11047



Front-End Loader Hose Kit
PN 196056



Rubber Auger Replacement Kit
PN 11050

COMPACT SIZE BIG RESULTS

REPLACE MANUAL MATERIAL MIXING IN TIGHT SPACES!

With a 1/4 yard capacity (6.75 cubic ft.), the Mini MAC is engineered for powerful mixing and precise dispensing in tight spaces like backyards, basements, between buildings, and underground sites. Built for mini-track/skid loaders, this compact mixing and conveying (MAC) bucket features a mini-skid-steer quick attach mount on one end and a manual discharge gate on the other—delivering maximum functionality in a minimal footprint. Each Mini MAC bucket comes standard with one (1) 24" multi-linked chute and two (2) hoses with flush-faced couplers (ISO 16028).

MATERIAL HANDLING

Concrete
(up to 1" Slump)
Wildlife Feed
Agricultural Grains
Sand

TRANSPORT | MIX | DISPENSE



ACCESSORIES



**Mini MAC
Chute - 24"**
PN 11019



MAXIMUM DRIVING FORCE

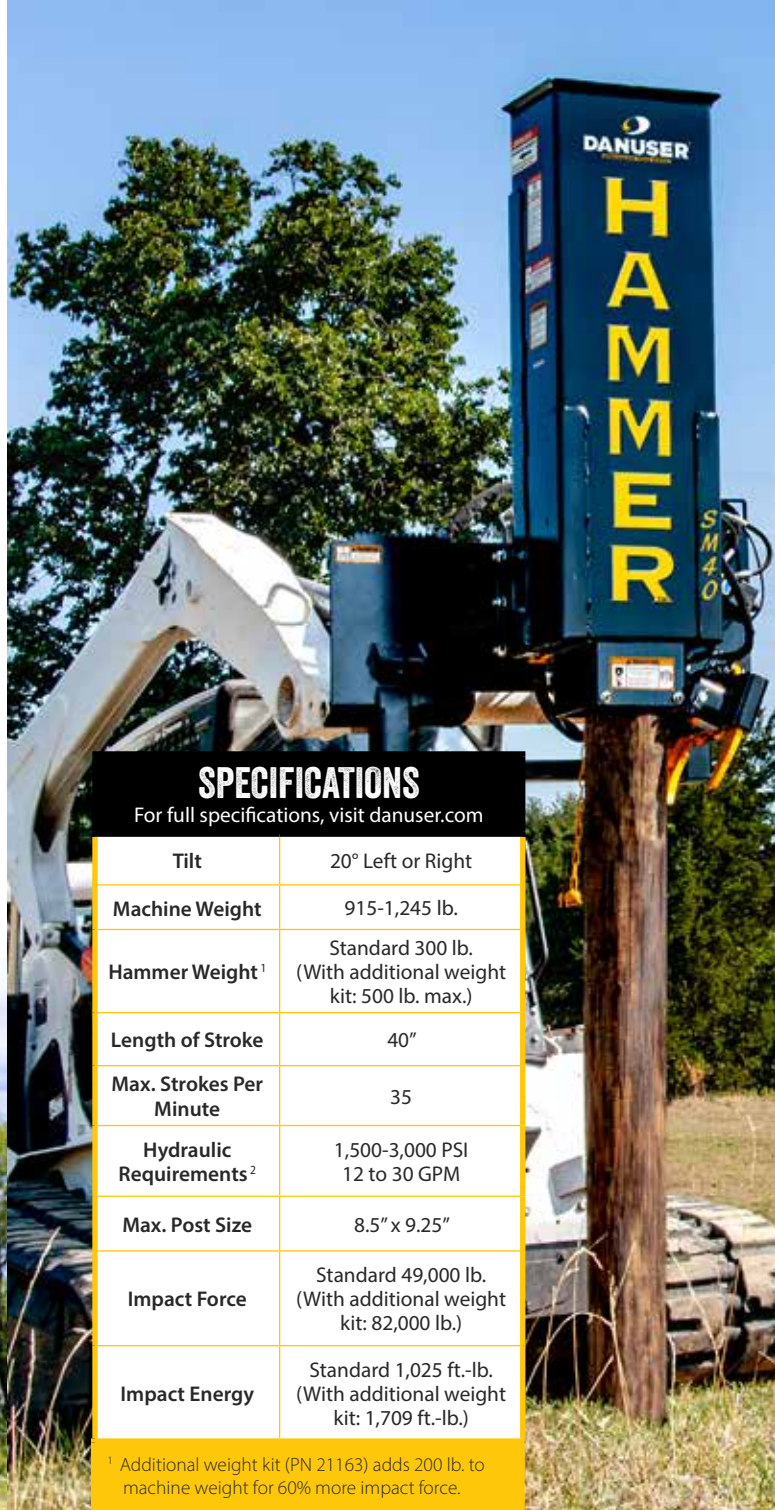
THE ORIGINAL ONE-PERSON POST DRIVER

The Hammer offers powerful and reliable post-driving performance without the need for springs, hydraulic cylinders, or return lines. The hydraulic grapple option lets the operator grab a post off the ground, load it into the machine, and drive it into the ground without leaving the vehicle seat, while the tilt option allows up to 20° tilt left or right.

- Free fall weight design creates smooth operation with less shock back to the vehicle
- 3/4" steel plate protects the top of the post from Hammer weight damage
- Delivers maximum impact force with every stroke
- Ability to short stroke to fine tune post depth
- Top of post is contained preventing kickout
- No setup required, it's ready to go to work
- 1-Year Warranty

MOUNTING OPTIONS

Skid-Steer
Quick Attach
Front-End Loader
Euro/Global
Backhoe &
Excavator



SPECIFICATIONS

For full specifications, visit danuser.com

Tilt	20° Left or Right
Machine Weight	915-1,245 lb.
Hammer Weight ¹	Standard 300 lb. (With additional weight kit: 500 lb. max.)
Length of Stroke	40"
Max. Strokes Per Minute	35
Hydraulic Requirements ²	1,500-3,000 PSI 12 to 30 GPM
Max. Post Size	8.5" x 9.25"
Impact Force	Standard 49,000 lb. (With additional weight kit: 82,000 lb.)
Impact Energy	Standard 1,025 ft.-lb. (With additional weight kit: 1,709 ft.-lb.)

¹ Additional weight kit (PN 21163) adds 200 lb. to machine weight for 60% more impact force.

² Hammer will still operate on vehicles with less than 12 GPM with fewer strokes per minute.

ACCESSORIES/OPTIONS



Floating Horseshoe Plate

PN 21212

Recommended for up to 5" diameter pipe. Aids in keeping the pipe centered in the driver and reduces wear and tear on machine. Does not interfere with the operation of the grapple. Works with T-post adapter.



Guard Rail Plate

PN 21280

Recommended when driving 6" or 8" I-beams. Aids in keeping the guard rail from twisting and shifting.



Donut Plate

PN 21395

Recommended for up to 5" diameter pipe. More effective than the Horseshoe Strike Plate in keeping the pipe centered and reduces wear and tear on the machine. When using the grapple, a helper is recommended to position pipe in the Hammer. Works with T-post adapter.



Square Plate

4": PN 180005

6": PN 180007

Recommended when driving 4" or 6" square wood posts.

T-Post Adapter

PN 21149

Required for driving T-posts.



Concrete Breaker Kit

PN 21278

Replaces hammer weight with 500 lb. breaker attachment. Breaks up to 9" thick reinforced concrete. Delivers up to 82,000 lb. of impact force with each cycle. Kit includes additional hardware.



SM40

Skid-Steer Quick Attach Mounting Plate
(Shown with grapple option)



EM40

Offset Euro/Global Quick Attach Mounting Plate for Front-End Loaders



LM40

Offset Skid-Steer Quick Attach Mounting Plate for Front-End Loaders



EX40

Quick Attach Mounting Plate for Backhoes & Excavators

Grapple Option

May be added to any base model machine for one-person operation.

See danuser.com for part number.

Tilt Option

May be added to any base model machine for tilt up to 20° tilt left or right.

See danuser.com for part number.

Additional Weight Kit

PN 21163

Adds 200 lb. to machine weight for 60% more impact force.

Battery Connection Wiring Harness

PN 21253

Wiring Harness

For CTL/skid-steer models only.

Allows control of tilt function from vehicle joystick.

See danuser.com for part number.



BREAK THROUGH THE TOUGHEST JOBS

PRECISION DEMOLITION WITH 82,000 LB. OF IMPACT FORCE.

The Danuser Hammer CB40 is a powerful concrete breaker designed for fast, efficient demolition of sidewalks, curbs, foundations, and more. Its 40" drop hammer delivers full-force impacts with every stroke, breaking up to 9" of reinforced concrete without the need for setup. The free-fall design minimizes shock to the vehicle, while built-in features protect the post and prevent kickout. With a focus on reliability and ease of use, the CB40 is built to keep your crew productive and your equipment protected.

- ☞ 82,000 lb. of impact force and 1,709 ft-lb. of impact energy
- ☞ Free fall weight design creates smooth operation with less shock back to the vehicle
- ☞ Anti-dry fire feature prevents unnecessary firing and improves durability of the machine
- ☞ Operates on machines with 1,500–3,000 PSI and 12–30 GPM*
- ☞ No setup required, it's ready to go to work
- ☞ Less maintenance and flying debris than traditional breakers
- ☞ CB40 breaker kit available to convert any Hammer post driver into a concrete breaker
- ☞ 1-Year Warranty

* Breaker will still operate on machines with less than 12 GPM, but with fewer strokes per minute

MOUNTING OPTIONS

Skid-Steer Quick Attach
Backhoe & Excavator



DRIVE LIKE A PRO...

...EVEN ON YOUR OWN

The Hornet is a quick and powerful post driver, featuring a jackhammer-style power cell for controlled, high-speed performance. Its hydraulic grapple enables one-person operation, making it a versatile all-in-one solution for post installation.

Standard flow control valve allows for use on a wider range of hydraulic systems, including high-flow machines, without accelerated wear on the driver. Additional weight kit option (CTL/skid-steer models only) helps fine tune the weight of the driver to match the operating capacity of the vehicle and increases driving speed up to 50%.

- ☞ Tilt option allows 20° tilt left or right
- ☞ Choose a domed, flat, or railroad tie flat (T8-RR only) driving tool
- ☞ Tool-less quick change eliminates the need for hammer and punch when changing driving tools
- ☞ CTL/skid-steer mounted machine includes a post holder frame with tie down for transporting posts/pipe
- ☞ 1-Year Warranty



MODEL TYPES

T7: T-post to 7" O.D. post or pipe

T8-RR: T-post to 8" O.D. post, pipe, or railroad tie

SPECIFICATIONS

For full specifications, visit danuser.com

	Model T7	Model T8-RR
Base Weight	Skid-Steer Mount: 1,290 lb. Backhoe & Excavator Mount: 975 lb.	Skid-Steer Mount: 1,485 lb. Backhoe & Excavator Mount: 1,150 lb.
Max. Strikes per Minute	500-900	400-800
Hydraulic Requirements	2,000 - 3,500 PSI 10-30 GPM	2,200 - 3,500 PSI 13-30 GPM
Driving Tool Inside Diameter (Max. Post Size)	Domed: 7.27" Flat: 7.27"	Domed: 8.27" Flat: 8.27" Railroad Tie (Flat): 12.3"
Excavator Weight*	9,000 lb. and over	13,500 lb. and over
Energy Class	750 ft.-lb.	1,150 ft.-lb.
Mounts	Skid-Steer, Backhoe & Excavator Quick Attach (not for front-end loaders)	

* Do not exceed the rated operating capacity of your vehicle. The addition of a Hornet and its mount adds up to 1,600 lb. of additional weight. Verify that the vehicle has sufficient lifting capacity in each of the different vehicle positions. On Hornets with a grapple, the post weight will need to be considered as additional weight for lifting capacity considerations.



BACKHOE & EXCAVATOR MOUNTS



Tool-less quick-attach system

Three-hole adjustment for vehicle clearance

Mounts sold separately from base unit



Optional adapter allows excavator-mounted Hornet to be used on CTL/skid-steers

ACCESSORIES / OPTIONS

Grapple Option

May be added to any base model machine for one-person operation.

See danuser.com for part number.

Additional Weight Kit

With Tilt: PN 214201

Without Tilt: PN 200076

For CTL/skid-steer models only.

Wiring Harness

For CTL/skid-steer models only.

Allows control of tilt function from vehicle joystick.

See danuser.com for part number.

Tilt Option

May be added to any base model machine for tilt up to 20° tilt left or right.

See danuser.com for part number.

Battery Connection Wiring Harness

PN 21253



Driving Tools

Domed: (T7: PN 196067 / T8-RR : PN 196074)

Suitable for all types of posts and pipe.

Flat: (T7: PN 196067F / T8-RR: PN 196074F)

Generally used for wood posts.

T8-RR Railroad Tie Flat: (PN 196074R)

Generally used for 7"x9" railroad ties or other posts up to 12" diameter.



T-Post Adapter

PN 21149

Required for driving T-posts. If using Domed Driving Tool, must order T-Post Adapter Domed Driving Tool Kit (PN 220011)



*Concrete Breaker

T7: PN 236080

T8-RR: PN 236082

Use to break rock and reinforced concrete. Tool has amoil style point.



*Rock Spike

T7: PN 236089

T8-RR: PN 236090

Use to create pilot holes for posts in rocky areas. Overall length 60".



*When storing skid-mounted Hornets, the driving tool must be re-installed.



EFFORTLESS POST DRIVING

THE T3 POST DRIVER IS A SMALL DRIVER THAT DELIVERS BIG TIME RESULTS!

The T3 Driver will drive T-posts up to a 3" O.D. pipe at a rate of up to six strikes per second. The top of the post is fully contained to prevent kick out and protected from damage by the strike plate. Use your tractor, CTL/skid-steer, mini-track/skid loader, mini-ex, loader, or backhoe to carry the weight of the driver. This is an ideal post driver for most farmers, ranchers, fencing contractors, and rental yards.

- 🌀 6 strikes per second up to 30 GPM
- 🌀 Drives T-posts, tent stakes, signposts, and up to 3" O.D. pipe
- 🌀 Versatile mounting options are available for quick attach systems, as well as a bolt-on/weld-on bracket that mounts to a flat surface. (All mounts are interchangeable with the T3 and tilt bracket.)

ACCESSORIES



Tilt Bracket Assembly

PN 21301

Tilt left or right up to 20°



Extra Mount Bracket

PN 21302

Bolt-on/weld-on bracket that mounts to a flat surface



Front-End Loader Hose Kit

PN 196056



Plumb Bob

PN 21356

Provides vertical line reference for operator





MOUNTING OPTIONS



Skid-Steer Quick Attach Mount

PN 21305

Equipped with offset mounting for front-end loaders



(Shown Arm Retracted)

Skid-Steer Offset Quick Attach Mount

PN 21355

Telescopes left or right 5' from center in 6" increments



(Shown Arm Extended)

Allows operator to drive parallel with fence



John Deere 200/300/400/500 Series Quick Attach Mount

PN 21304



Euro/Global Quick Attach Mount

PN 21303



Bobcat MT Quick Attach Mount

PN 240607



Mini-Skid Quick Attach Mount

PN 220240











Backhoe & Excavator Quick Attach Mounts

See www.danuser.com for more information.

PLANETARY POWERHOUSE

DESIGNED TO DIG DEEPER AND LAST LONGER

The EP is built with a Danuser engineered planetary with up to 42% more output torque than the competition. Hoses routed out the top of the drive unit, secured with bulkhead nuts, allow for deeper digging in tighter spots with better hose protection. Backed by a 5-year warranty on the drive unit and lifetime coverage for spindle pullout, the EP is built to handle the toughest jobs.

-  Convenient check and fill plugs for quick service
-  Output spindle manufactured as a single piece
-  Mounts available for CTL/skid-steers, mini-track/skid loader, front-end loader, backhoe, and excavator
-  Skid-steer quick attach mounts fit both CTL/skid-steers and front-end loaders
-  Hose holder spring kit included on skid-steer and offset tractor loader mounts
-  All drive units ship with 45° hose fittings installed
-  Compatible with 2" hex auger bits
-  Comes with auger retaining bolt

MOUNTING OPTIONS



Skid-Steer / Front-End Loader Quick Attach Mount

PN 180415
Center & Offset



Offset Quick Attach Front-End Loader Mounts

PN 190053 - John Deere 200-500 Series
PN 190052 - Euro/Global (not shown)



Mini-Skid Quick Attach Mount

PN 200185 - Mini-skid-steer
PN 200207 - Bobcat MT



Backhoe & Excavator Pin-On Mounting Kits



Backhoe & Excavator Quick Attach Mounting Kits



Bolt-On Bucket

PN 190203





EP615

Output Speed

GPM	RPM
6	36
8	48
10	60
12	73
14	85
15	91

Output Torque

PSI	FT.-LB.
2,000	1,014
2,500	1,267
3,000	1,520
3,500	1,774

Max. Auger Dia.: 24"
Hyd. Flow: 6-15 GPM
Max. Hyd. PSI: 3,500

Gearbox Ratio: 3.86:1
2" Hex
No Case Drain Req'd



EP1020

Output Speed

GPM	RPM
10	48
12	58
14	68
16	77
18	87
20	97

Output Torque

PSI	FT.-LB.
2,000	1,270
2,500	1,587
3,000	1,904
3,500	2,222

Max. Auger Dia.: 30"
Hyd. Flow: 10-20 GPM
Max. Hyd. PSI: 3,500

Gearbox Ratio: 3.86:1
2" Hex
No Case Drain Req'd

Yellow-shaded areas indicate recommended operating ranges. Output speed and torque specifications are based on theoretical values and are provided for comparative purposes only.



EP1530

Output Speed

GPM	RPM
15	49
18	59
20	65
24	78
28	92
30	98

Output Torque

PSI	FT.-LB.
2,000	1,874
2,500	2,342
3,000	2,811
3,500	3,279

Max. Auger Dia.: 36"
Hyd. Flow: 15-30 GPM
Max. Hyd. PSI: 3,500

Gearbox Ratio: 3.86:1
2" Hex
No Case Drain Req'd

EP2035

Output Speed

GPM	RPM
20	48
22	53
26	63
30	73
32	78
35	85

Output Torque

PSI	FT.-LB.
2,000	2,529
2,500	3,161
3,000	3,794
3,500	4,426

Max. Auger Dia.: 36"
Hyd. Flow: 20-35 GPM
Max. Hyd. PSI: 3,500

Gearbox Ratio: 3.86:1
2" Hex
No Case Drain Req'd

AUGERS



FAB (Light-Duty)

Light to Moderate Ground Conditions

Available Diameters

4", 6", 8", 9", 10", 12", 15", 16", 18", 20", 24", 30", 36"



CAST (Heavy-Duty)

Difficult Ground – Fracturable Rock, Asphalt, Frozen Ground, Heavy Clay, & Compacted Soils

Available Diameters

6", 8", 9", 10", 12", 15", 16", 18", 20", 24", 30", 36", 42", 48"



BULLET ROCK

Solid Rock, Concrete, Fracturable Rock, Asphalt, Frozen Ground, & Compacted Soils

Available Diameters

4.5", 6", 8", 9", 10", 12", 15", 18", 24", 30", 36"

NOTE: As with all rock augers, performance depends upon down force and torque applied to the auger.

Auger lengths are available in a standard 4' size, with additional options of 3', 5', and 6'. Custom length augers available upon request.

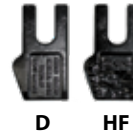
FISHTAIL POINTS

Dirt = D
Hardfaced = HF
Carbide = C

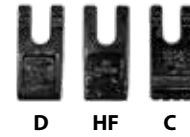


TEETH

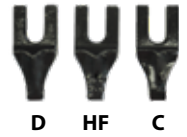
GAGE - FAB & CAST
(Outside)



WISDOM - FAB
(Inside)



CHISEL - CAST
(Inside)



SPECIALTY AUGERS

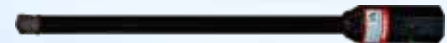


TREE

Tree and Shrub Planting

Available Diameters

18"-9", 24"-12", 30"-15", 36"-18"



ROCK DRILL

Pilot Holes or Setting Posts
up to 2" O.D. in Solid Rock





WOBBLE AUGER

THE DIRTLESS DIGGING SOLUTION

Danuser's patented Wobble Auger digs through tough ground conditions without leaving a dirt pile mess at the top or bottom of the hole.

NOTE: We recommend the 9" Wobble Auger be used on a vehicle with an operating load or rated operating capacity of 2,250 lb. or greater, utilizing an auger drive with 2,000 ft. lb. of torque or greater.

PUSHES THROUGH

Dirt
Sand
Clay
Asphalt

Compacted Rock
Embedded
Rock
Frozen Ground

Available Diameters: 4", 6", 9"

STUMP AUGER

THE CUTTING EDGE BEHIND CLEANUP

- 🔧 2" hex collar
- 🔧 Reversible/indexable hardened steel cutting blades allows for more cutting per blade
- 🔧 Hardened steel pilot with cutting blades
- 🔧 10" and 16" diameter options
- 🔧 10" for use with 1,700 ft.-lb. of torque and higher drive units
- 🔧 16" for use with 3,000 ft.-lb. of torque and higher drive units
- 🔧 Overall length: 27" for both sizes





TAKE THE BITE OUT OF ROLLING UP FENCE WIRE

WIRE WINDER

The Python Wire Winder uses an auger system to effortlessly roll up fence wire, making it more manageable for handling and transportation.

- Can roll up to 3/4 mile of barbed wire (12.5 gauge) or six miles of smooth wire (14 gauge)
- 2" hex connection mounts to existing hydraulic auger drive (not for PTO use)
- Two (2) tie wire locations
- Ten (10) slot locations to start wire
- Tool-less operation
- Convenient retention pin holder locations
- Roll multiple wires at one time

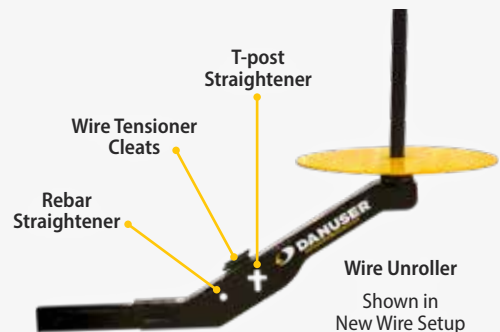
NOTE: To be used ONLY with front-mounted hydraulic auger drives.



WIRE UNROLLER

The Python Wire Unroller easily unrolls new and Python-rolled spools of wire for faster fencing.

- Unrolls barbed or smooth wire
- Connects to a 2" receiver hitch
- Optimal clearance for open tailgates providing easy access to cargo area
- Built-in wire tensioner cleats for stretching and holding wire for desired tightness
- Controlled spinning to prevent backlash
- Angled design of hitch connection gives the Python Wire Unroller an additional 9-1/2" of ground clearance for work in uneven terrain



LOCK & LOAD

DANUSER OFFERS PALLET FORKS FOR A NUMBER OF DIFFERENT QUICK ATTACH SYSTEMS.

Expand the functionality of your pallet forks to carry logs, rocks, pipe, brush, debris, hay bales, fence posts, and more. Two options fit most pallet fork frame brands. Multi-Purpose Grapple bolts on with no frame modifications required. Unique design allows the grapple jaw to be quickly pinned in the upright position for normal pallet fork use.



PALLET FORKS

- ☛ Heavy-duty rail style frame supports up to 6,000 lb.
- ☛ Excellent operator visibility through frame, brick guard, & grapple
- ☛ Multiple tie-down locations on frame
- ☛ Flip-up latch style tine adjustments
- ☛ 4,200 lb. or 5,500 lb. tine capacities
- ☛ 48" tine length
- ☛ 2-Year Warranty



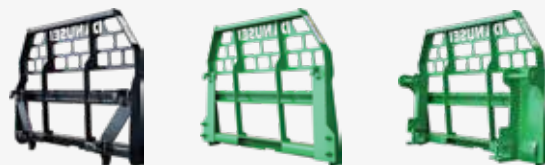
Pallet Fork Customization

Personalized brick guards available (for sets of 10 or more)

SKID-STEER QUICK ATTACH MOUNTS



FRONT-END LOADER QUICK ATTACH MOUNTS

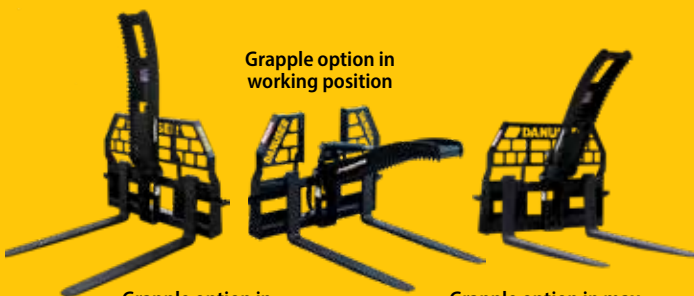


Euro/Global Loader
PN 12035

John Deere 200/300/400/500 Series Loaders
PN 12033

John Deere 600/700 Series Loaders
PN 12034

Grapple option in working position



Grapple option in locked/stored position

Grapple option in max. opened position

GRAPPLE

- ☛ Grapple can be locked and stored for normal pallet fork use (no tools required)
- ☛ Easily carry rocks, brush, logs, and more
- ☛ Maximum grapple opening of 55"
- ☛ Produces up to 9,500 lb. of force to secure loads
- ☛ 1-Year Warranty

DANUSER FAMILY LEGACY

Danuser Machine Company traces its origins to 1880, when Swiss emigrant Kasper Berry Danuser arrived in the U.S. In 1905, he built the first Danuser-branded farm wagon in Readsville, Missouri. By 1910, the family settled in Fulton, where Kasper ran a blacksmith shop while also threshing grain and sawmilling. His son, Henry, inherited his mechanical skill, working in aviation and traveling Europe before returning home to expand the family business.

Henry took over in 1937, shifting from repairs to manufacturing. He introduced a portable air compressor, a tree-moving machine, and the first rear-mounted tractor blade in the U.S. Danuser supplied major companies like Ford, Case, and International Harvester, producing thousands of implements. In 1968, the company earned the Presidential "E" Award for export excellence, reinforcing its global reputation. Through decades of innovation, Danuser remained committed to quality and craftsmanship.

Now in its fourth generation, Danuser remains committed to quality, growth, and its employees. We take pride in our history, our people, and our products, ensuring the same dedication that has sustained us for over a century. As we expand to meet today's needs and plan for the next 100 years, we hold true to the words that have guided us from the beginning: "Good enough won't do- it must be right."

Glenn Danuser, Co-Owner

Janea Danuser, Co-Owner

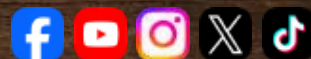


 **DANUSER**

500 E 3rd St. • P.O. Box 368
Fulton, MO 65251

(573) 642-2246 • sales@danuser.com

WWW.DANUSER.COM





We are a fourth-generation, family-owned and operated business; we pride ourselves on our commitment to building quality attachments. With a full in-house engineering staff and a rigorous testing program, we ensure every product meets the highest standards before going to market. Our wide-ranging manufacturing facility allows us to design unique and niche attachments, while our dedication to superior customer service and continued support after the sale sets us apart. We are committed to the next 100 years of growth and innovation.

Sincerely,
Glenn Danuser

“Good enough won’t do
– it must be right.”



Scan for how to buy, videos,
and to connect with us.